

# ALARMAGENT.com®



wireless. web-based. worthy of the name **RACO.**

**reliable monitoring  
unequaled accessibility  
on-demand reporting**



***wireless, web-based alarm detection  
and notification system from RACO  
designed specifically for water and  
wastewater pump applications***

Dependable alarm monitoring and detection. Highly customizable notification preferences. Around-the-clock status access from almost anywhere. Simple administration of WRTUs, preferences, users, reporting parameters and more.

AlarmAgent.com's report generation capability is optimized for pump applications. Users can spot clogged or malfunctioning pumps in time to prevent a major disaster. And, for the first time, small pump stations can report flow data *without* a flow meter. All this and more!

AlarmAgent.com combines the latest in data communications and wireless technology with the reliability and reputation of RACO's half-century of industry experience.

# wireless rtu

## features

- 1 Totally Wireless RTU**  
Easy to install. Goes where landlines can't, with 98% availability across North America.
- 2 Reliable, Web-Based Communication**  
Triple redundant, secure website links WRTU with AlarmAgent.com system.
- 3 Secure, 24/7 Access**  
Retrieve equipment and status info anytime, from any web-enabled device or by calling a toll-free number.
- 4 Robust Monitoring & Control Functionality**  
Simple configuration through system templates. Integrates 8 digital and 2 universal inputs, and 2 relay outputs.
- 5 Straightforward User Interface**  
Immediate status updates for a number of functions: Signal strength, transmission, local service registration, armed/disarmed, AC/battery, on/off.
- 6 Custom User Templates**  
Simplify configuration remotely or locally. Optimized for water and wastewater pump applications.
- 7 On-Demand Custom Reporting**  
Web-based access anytime to system alarm and status reports. View and export data as you specify with customizable ranges.
- 8 Flexible Alarm Notification**  
Instant notification of alarm conditions by voice, SMS, pager and e-mail.



(WRTU shown at actual size)

# web-based interface

**monitor** — View your system activity on a single, straightforward “dashboard” screen.

AlarmAgent.com’s user-friendly, web-based interface puts everything you need right at your fingertips. The easy-to-use control panel allows you to access WRTU status, notification order and contact preferences, alarm activity (even across multiple stations) and details of alarm acknowledgment activity. And no additional software is required.



**System Dashboard Screen**  
Review and access alarms from a single screen.



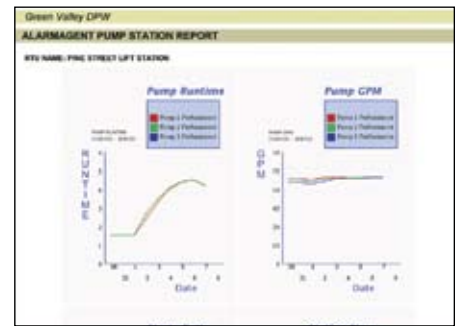
**WRTU Status Screen**  
Get the complete status of your WRTUs anytime.

**report** — Generate comprehensive reports on-demand with just the click of a mouse.

AlarmAgent.com gives you immediate access to the custom reporting you need, and creating your reports is simple. We’ve made it easier than ever for you to generate comprehensive reports and pump-station analyses. The collected data can be analyzed to optimize system efficiency for your operation. The onscreen interface provides customizable

ranges, which allow you to view your data as you specify.

With a few simple clicks, your interface will produce your selected reports, including Pump Runtime, Pump GPM, Pump Starts Ratio, Pump Station Flow, WRTU Commands, Analog Reading and Arm / Disarm.



**Reporting Screen**  
Analyze data to optimize system efficiency.

**configure** — Easily set and administrate the parameters of your system.

AlarmAgent.com provides extreme flexibility for custom configuration. Add stations. Change alarm parameters. Manage users and update their notification preferences. All this functionality and more is possible through clear instructions and drop-down menus that allow you to manage your selections in just seconds.



**WRTU Channel Configuration Screen**  
Reconfigure channels in seconds.



**Add a User Screen**  
Easily change user permissions and preferences.

# system options

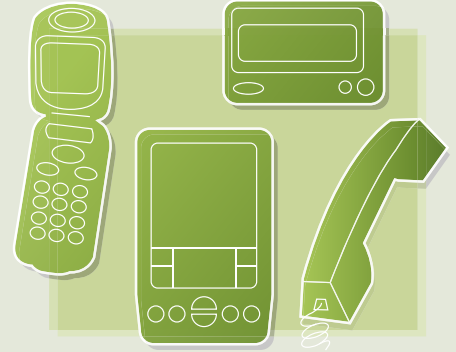
## customizable notification

Today's technology allows people to be reachable wherever they go. That's why AlarmAgent.com's notification features employ all of today's personal and business communications technology — to help you ensure, and document, that your alarms are received and responded to as quickly as possible.

In an alarm condition, AlarmAgent.com will send notification through cell phone, e-mail, landline, pager or SMS.

Recipients may acknowledge these alarm notifications during voice calls or through e-mail responses. Users can also proactively respond using a toll-free number or the AlarmAgent.com system dashboard.

On-screen, administrators can easily add users, customize their methods of contact, and determine the proper hierarchy for notification.



## flexible service plans

AlarmAgent.com provides several advantages over landline-based service, including lower cost, greater reliability, the ability to go where land-based systems can't and no cellular provider contract.

AlarmAgent.com is available through a number of service plans, with a variety

of options to suit your specific system requirements. Choose from a range of plans within the Standard, Enhanced Analog, Enhanced Arm/Disarm and Premium divisions, and select your preferred terms of 1 Year, 2 Years, 3 Years or Monthly agreement.

Service plans vary by the type of AlarmAgent.com WRTU template you select. A range of variables, such as Digital Input Alarms, Power Failure Alarms, Analog Alarms, certain Reporting details and others will determine which service plan is right for you.

## wide-ranging applications

- Water & Waste
- Electric Utility
- Building Management
- HVAC & Refrigeration
- Equipment Rentals
- Agricultural
- Oil & Gas
- And More



**learn more at [www.alarmagent.com](http://www.alarmagent.com)**

Visit our website for detailed information such as a full interactive demo, engineering specifications, owner's manual, service agreements, helpful web links and more.

# specifications

## MODELS

AlarmAgent.com Wireless Remote Terminal Units (WRTU) are offered in 4 different models:

**AA-102** AlarmAgent.com WRTU with NEMA 1 Enclosure

**AA-102OC** AlarmAgent.com WRTU with Open Chassis

**AA-102NEMA4XP** AlarmAgent.com WRTU with NEMA 4X Enclosure and Phantom Antenna

**AA-102NEMA4XY** AlarmAgent.com WRTU with NEMA 4X Enclosure and Yagi Directional Antenna

## ELECTRICAL

**Eight Digital Inputs:** For connection to dry (unpowered) contacts. Open circuit voltage 5VDC; closed circuit current 2mA DC.

**Two Universal Signal Inputs:**

*Digital:* Open circuit voltage 5VDC; closed circuit current 2mA DC.

*Analog:* 4-20MA, single ended. Maximum voltage drop 2.5 VDC.

*Resolution:* 0.1%, absolute accuracy is 0.25%.

**Two Relay Outputs:** Normally Open Relays, 0.5-ampere @ 120VAC

**Serial Port:** 9 pin D Sub male RS232 configuration port

**Battery Backup:** 24 hours, 12 volt @ 1.2 Amp Hr

**Power Management:** System intelligently manages power during power failure.

**Power Requirements:**

User supplied. The WRTU operates on 12 to 24 VDC power input.

With 12 VDC input, current is 1-ampere peak, 200 mA average.

With 24 VDC input, current is 0.5-ampere peak, 100 mA average.

**Battery Charging:** Precision voltage controlled to maximize battery life and rapidly recharge the battery after power failure.

**Power Failure:** Automatic alarm for external power failure and low battery detection.

**Power Consumption:** 2 watts nominal

**Solar Power:** The WRTU is operable directly from a 13.6 VDC solar power unit. Average current is 175 ma or less.

**Surge Protection:**

Digital inputs are opto-isolated and rated at 5,000 volts.

Universal inputs are rated at 600 watts.

Power input is protected to 1,500 watts peak. The fuse is automatically reset.

## PHYSICAL

**Enclosure:**

Open chassis: 9.6" H x 4.0" W x 2.44" D

NEMA 1 enclosure: 9.6" H x 4.35" W x 2.75" D

NEMA 4X enclosure: 11.5" H x 4.33" W x 5.5" D

Find more information on accessories [here](#)

**Mounting Centers:**

Open chassis: 3-1/2" x 5-15/16"

NEMA 1 enclosure: 3-1/2" x 6-19/32"

NEMA 4X enclosure: 4" x 8-3/4"

**Weight:**

Open chassis: 2.4 lbs w/rubber duck antenna

NEMA 1 enclosure: 2.7 lbs w/rubber duck antenna

NEMA 4X enclosure: 5.5 lbs w/Phantom antenna

## ENVIRONMENTAL

**Temperature range:**

Operating, -30 to 70°C (-22 to 158°F)

Storage, -40 to 85°C (-40 to 185°F)

**Humidity:** 0 to 95% non-condensing

## COMMUNICATIONS

Bi-directional WRTU communications are handled by the AlarmAgent.com secure server via the wireless cellular network.

## SYSTEM CONFIGURATION

The WRTU is configurable by two possible means: via dipswitch or wirelessly via AlarmAgent.com. By selecting from 4 templates that are optimized for duplex pump stations with or without totalizer and triplex pump stations with or without totalizer, rapid installation and error-proof startup are virtually guaranteed. Three additional templates are available for more general applications.

## ALARM AND SYSTEM MESSAGES

User defined alarm and system messages are delivered via voice calls, SMS messages, alphanumeric pagers, and e-mail to an unlimited number of user specified destinations. Authorized personnel acknowledge alarms during voice calls via a toll-free number, e-mail, or through the AlarmAgent.com website.

## OPERATOR INTERFACE

The AlarmAgent.com WRTU includes pushbuttons to turn the unit on or off, to arm or disarm the unit, to cause a special Test Call to be generated, and a digital input Accept function to assist in the setup of the WRTU.

LEDs are used extensively throughout to indicate the status of the following subsystems: AC power status, battery status, network service availability, a 10 segment LED bar graph for service signal strength, actively transmitting, test report, customer account status, template setting status, individual input channel state, individual relay output state, and if any channels have exceeded their daily limit of transmissions.

## WARRANTY

Three year parts and labor warranty, FOB factory Emeryville, CA

## FIELD UPGRADES

AlarmAgent.com WRTU firmware is over-the-air upgradeable.

# why RACO?

Since 1948, RACO has built a reputation for reliability, innovation and customer service. We look for the latest breakthroughs and insist that they meet our standards before introducing them to our customers.

We are proud to put our name on AlarmAgent.com. It joins our complete range of alarm detection and notification systems that are ideal for a variety of applications. From the latest innovations to the trusted industry standards, RACO has a solution to fit your needs.

**CLICK ON THE LINKS BELOW TO ACCESS MORE INFORMATION**

- [Product Info](#)
- [Order Online](#)
- [Manual](#)
- [Tech Support](#)

## FOLLOW US

-  [www.facebook.com/RACOMann](http://www.facebook.com/RACOMann)
-  [www.linkedin.com/in/RACOMann](http://www.linkedin.com/in/RACOMann)
-  [www.twitter.com/RACOMann](http://www.twitter.com/RACOMann)
-  [www.youtube.com/RACOMann](http://www.youtube.com/RACOMann)



1400 62nd St.  
Emeryville, CA 94608  
(510) 658-6713  
sales@racoman.com  
www.racoman.com  
www.alarmagent.com

© Copyright 2011  
RACO Manufacturing and Engineering Co.  
Literature Code #190  
X.YM M/YY Printed in USA